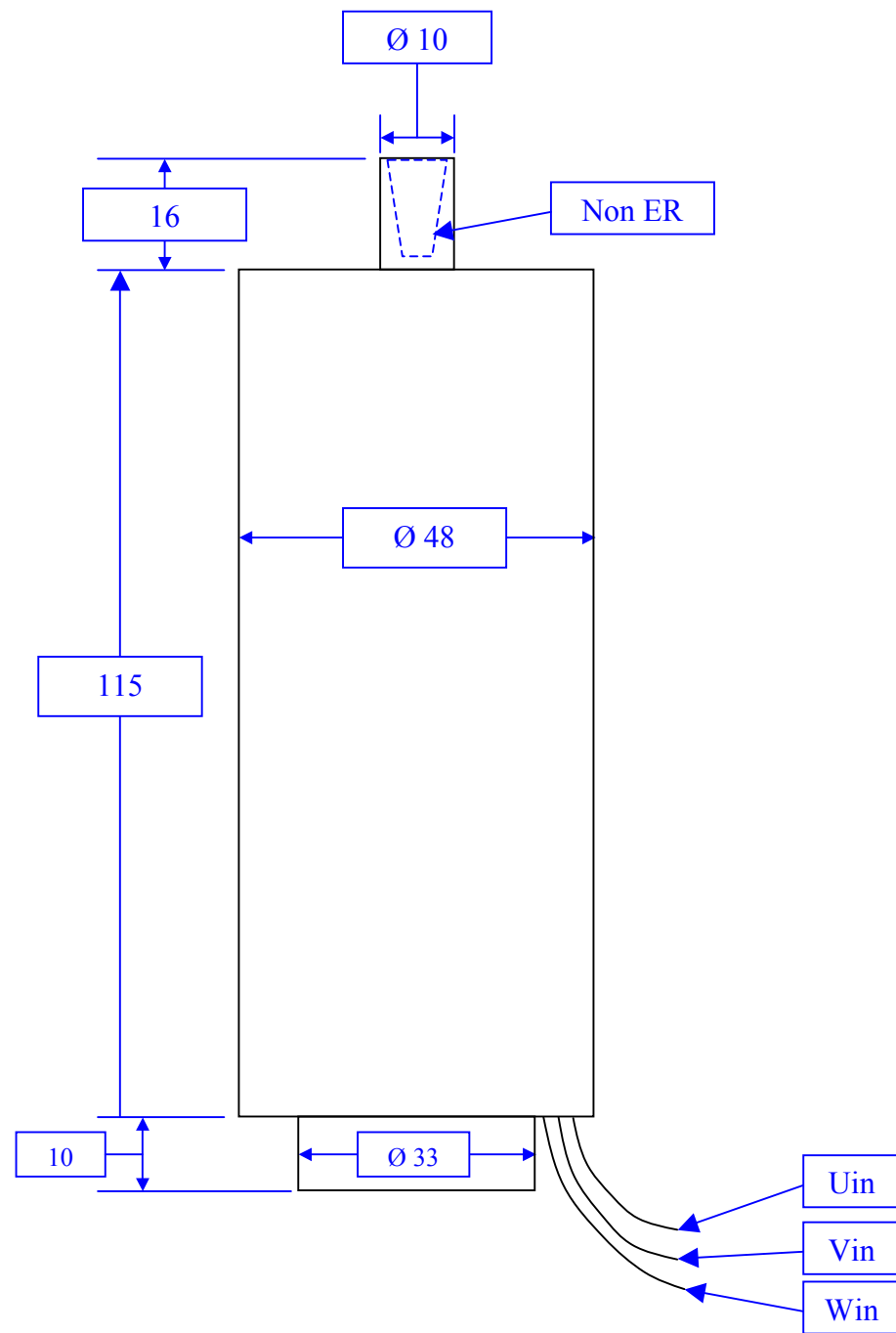
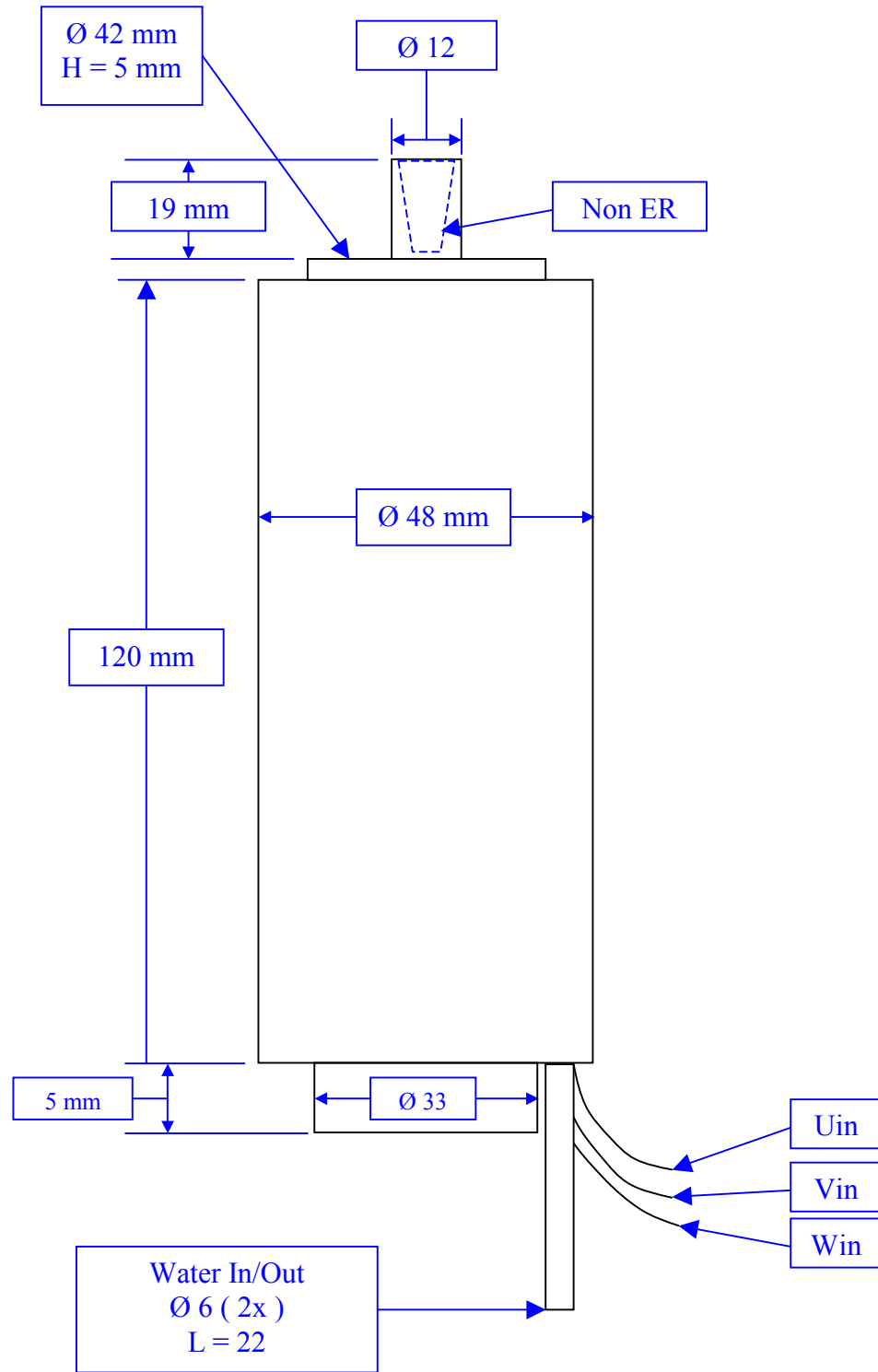


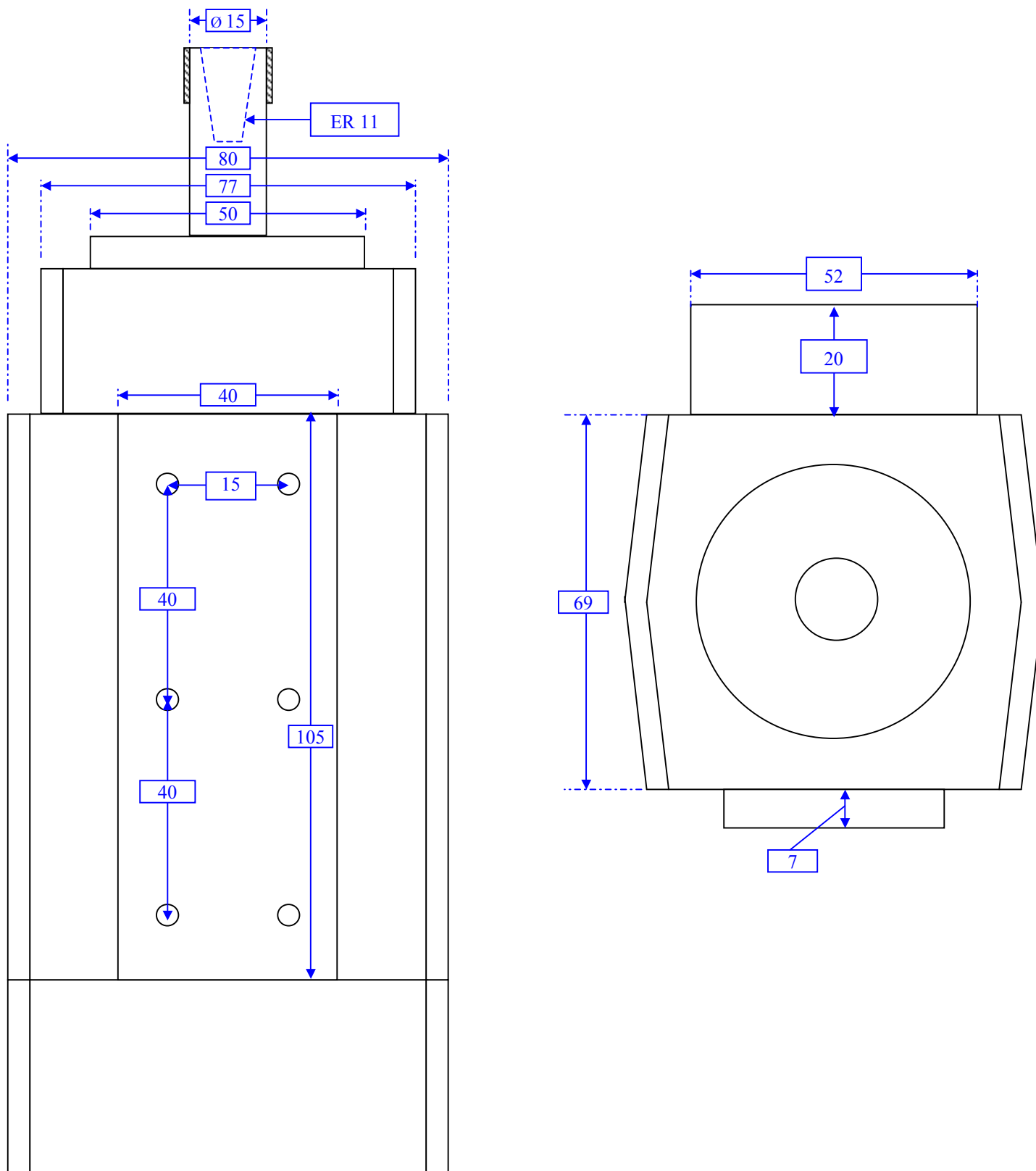
CNC HF Spindel HSSL1-100 (Lucht gekoeld / Air cooled)
36 Volt 1,5 Amp 100 Watt 1000 Hz 60.000 RPM



CNC HF Spindel HSSL1-300 (Water gekoeld / Water cooled)
75 Volt 5 Amp 300 Watt 1000 Hz 60.000 RPM

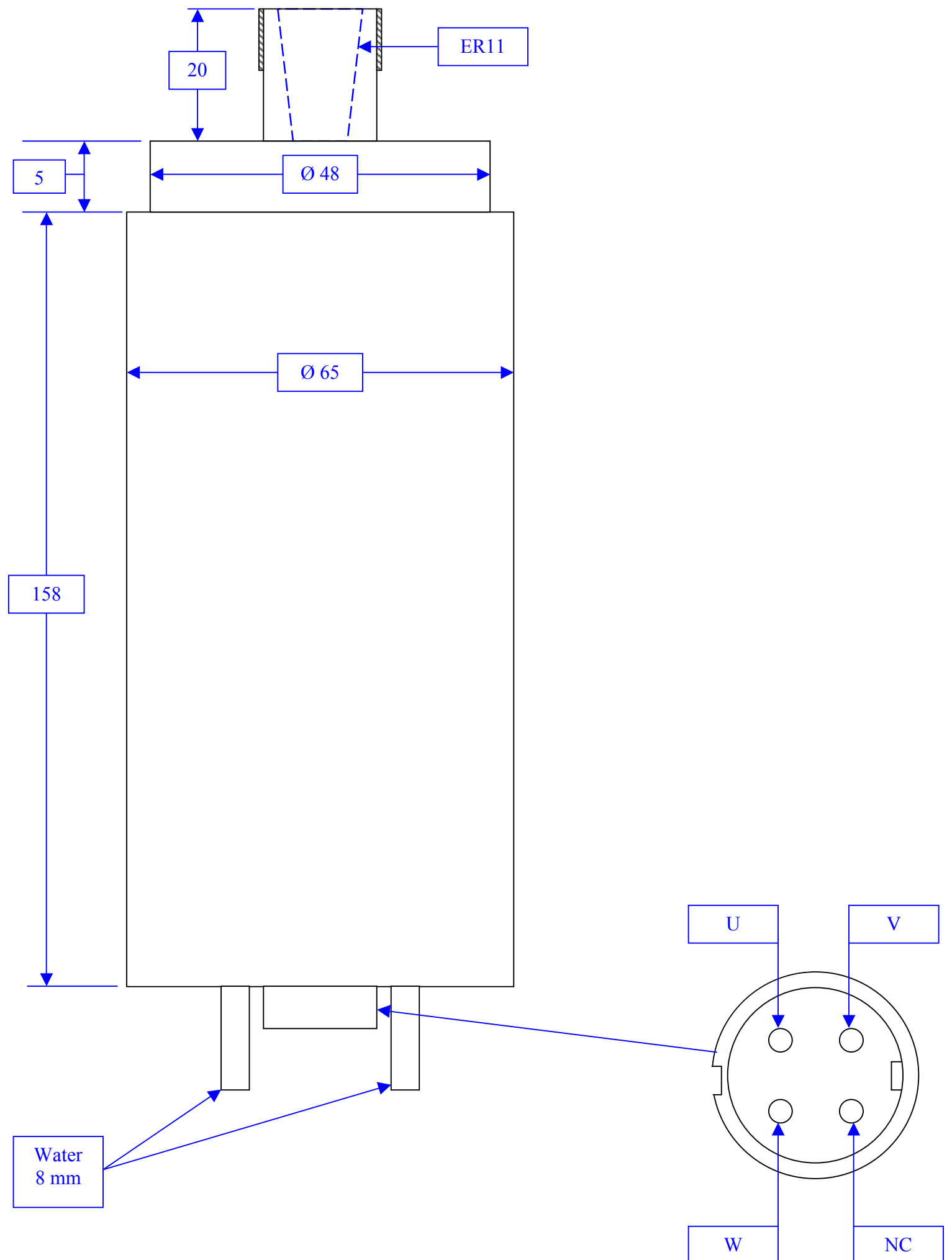


HF Spindel HSSL1-700 (Lucht gekoeld)
220 Volt 4Ampere 700 Watt 333 Hz 20.000 RPM



HF Spindel HSSL1-800 (Water gekoeld)

230 Volt 5,5 Ampere 800 Watt 400 Hz 24.000 RPM



HF Spindel HSSL1-2200 (Water gekoeld)

230 Volt 8 Ampere 2.200 Watt 400 Hz 24.000 RPM

